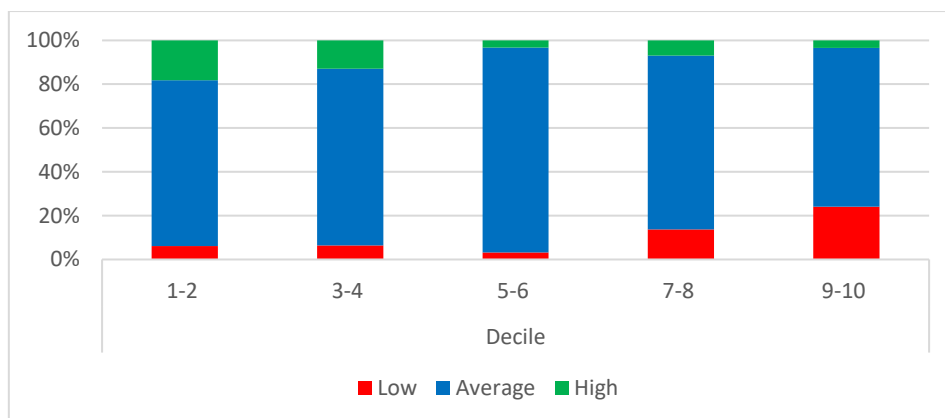
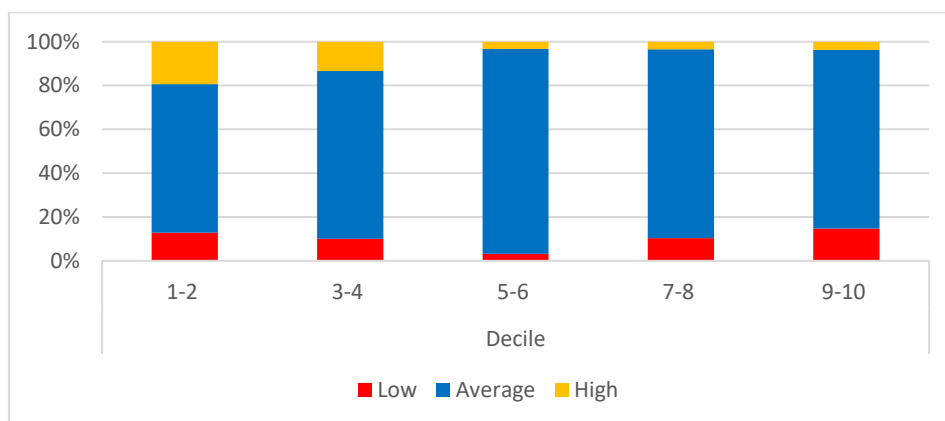


Figure 1: Distribution of secondary school performance based on the share of completed tertiary qualifications three years after graduation

Panel A: Unadjusted results



Panel B: Adjusted results



The New Zealand Initiative's latest report, *To Graduation and Beyond*, finds low decile schools overrepresented among the countries top performing secondary schools – after taking into account differences in the families they serve.